

Aligning Data Governance and Data Management

Gwen Thomas

Founder, The Data Governance Institute
Data Strategist, The World Bank Group



If You Want to Evolve,

You Need to Understand, Plan for, and Communicate:

WHY

- The Problem
- The Solution
- Why it Matters

WHAT

- The Context
- Proposed Changes to the Data/IT Environment
- Proposed Changes to the Human/Org Environment

HOW

- The “Entry Points” for Sparking this Evolution
- What Happens at these Points




Value Statement Formula

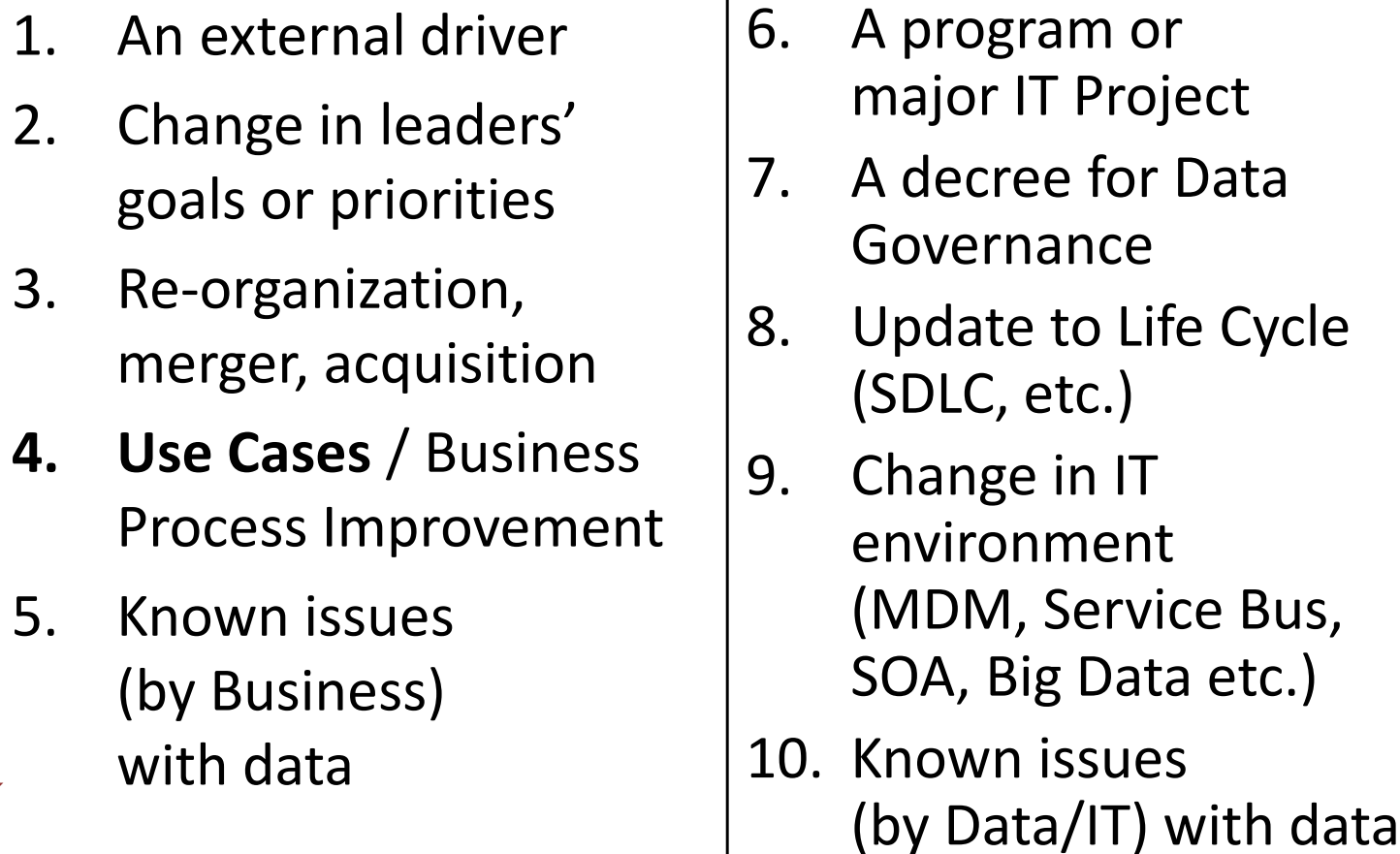
Formula for a value statement:

If we do **A**, then we can expect **B**,
which would/should result in **C**.

If we don't, then we can expect **D**,
which would/should result in **E**.

Source:  The Data Governance Institute

Entry Points for Sparking Evolution

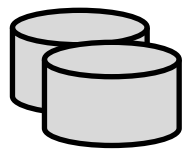
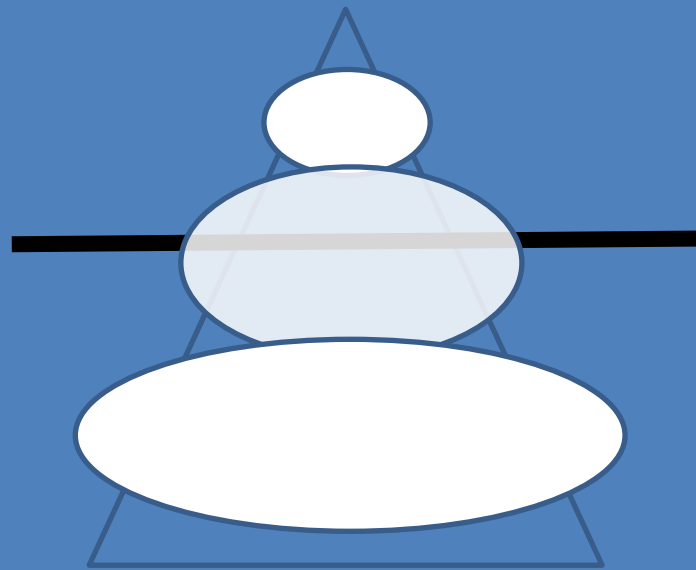
- 
- | | |
|--|--|
| <ol style="list-style-type: none">1. An external driver2. Change in leaders' goals or priorities3. Re-organization, merger, acquisition4. Use Cases / Business Process Improvement5. Known issues (by Business) with data | <ol style="list-style-type: none">6. A program or major IT Project7. A decree for Data Governance8. Update to Life Cycle (SDLC, etc.)9. Change in IT environment (MDM, Service Bus, SOA, Big Data etc.)10. Known issues (by Data/IT) with data |
|--|--|



Business Processes & Analytics

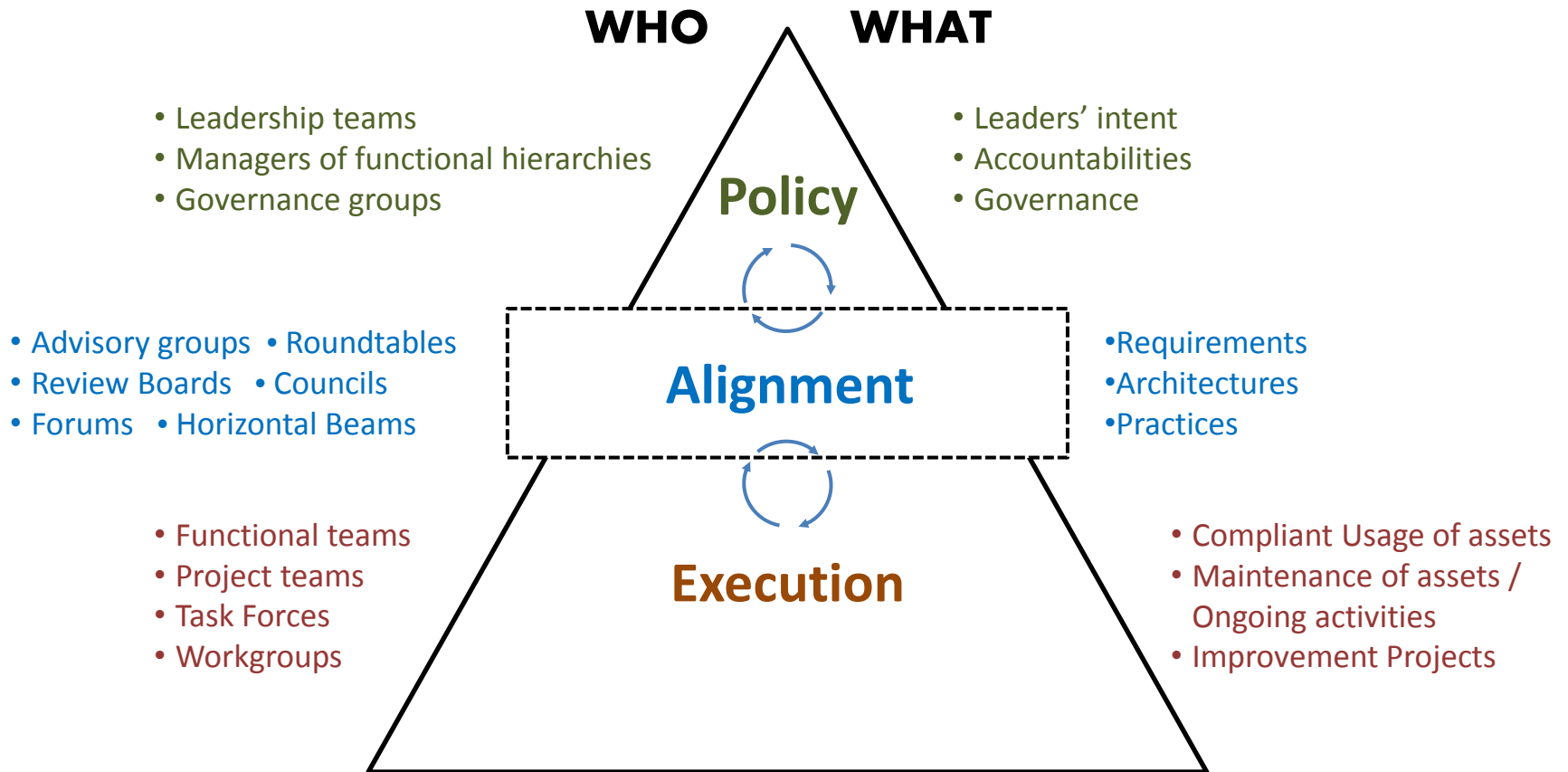
GOAL

Organizational Capabilities & Environments



Data / Technology Capabilities & Environments

Accountability Pyramids: Typically shown with three layers



RACI – DACI Chart for Data Modeling

RACI applies to tasks: **R**esponsible, **A**ccountable, **C**onsulted, **I**nformed
DACI applies to decisions that precede tasks: **D**ecide, **A**pprove, **C**onsulted, **I**nformed

<i>Decision or Task</i>	D / R	A	C	I	Comment
<i>WHO will model?</i>					
<i>WHAT tools/ environments will be used?</i>					
<i>WHEN must it be done?</i>					
<i>WHERE will the documentation reside?</i>					
<i>HOW will it be done?</i>					
<i>HOW MUCH is good enough for the work?</i>					
Model the Data	IFC Architecture: Data Modeler	IFC Architecture	<ul style="list-style-type: none"> • Business Analyst • Project Business Sponsor • Identified Data Stakeholders 	<ul style="list-style-type: none"> • Development Team 	